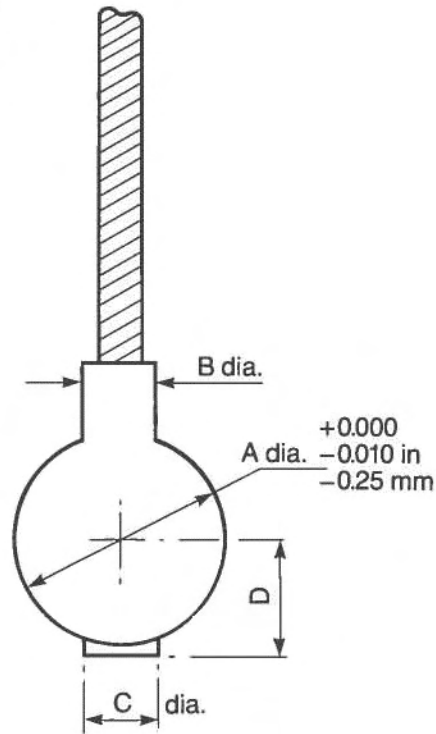
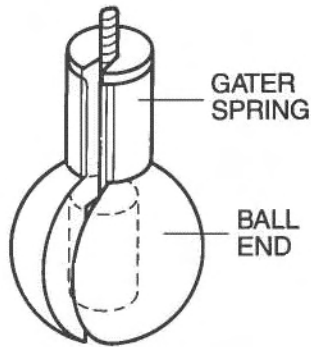




# Ball End



## SPECIFICATION

Code No.	Capacity	A	B	C	D	Cable length carried within ball	Wt
<b>41/136</b>	127/254 kg 280/560 lb	19.05 mm 0.75 in	9.7 mm 0.38 in	—	7.6 mm 0.3 in	29 mm 1.125 in	0.03 kg 0.06 lb
<b>43/80</b>	508 kg 1120 lb	26.97 mm 1.062 in	12.7 mm 0.5 in	12.7 mm 0.5 in	16 mm 0.63 in	43 mm 1.7 in	0.06 kg 0.13 lb
<b>43/90</b>	508 kg 1120 lb	38.1 mm 1.5 in	16.6 mm 0.65 in	12.7 mm 0.5 in	14.3 mm 0.562 in	48 mm 1.875 in	0.17 kg 0.37 lb
<b>54/107</b>	1270 kg 2800 lb	38.1 mm 1.5 in	16.6 mm 0.65 in	12.7 mm 0.5 in	20.6 mm 0.8 in	54 mm 2.125 in	0.17 kg 0.37 lb
<b>44/78</b>	914 kg 2016 lb	38.1 mm 1.5 in	16.6 mm 0.65 in	15.9 mm 0.625 in	25.4 mm 1 in	60 mm 2.375 in	0.17 kg 0.37 lb