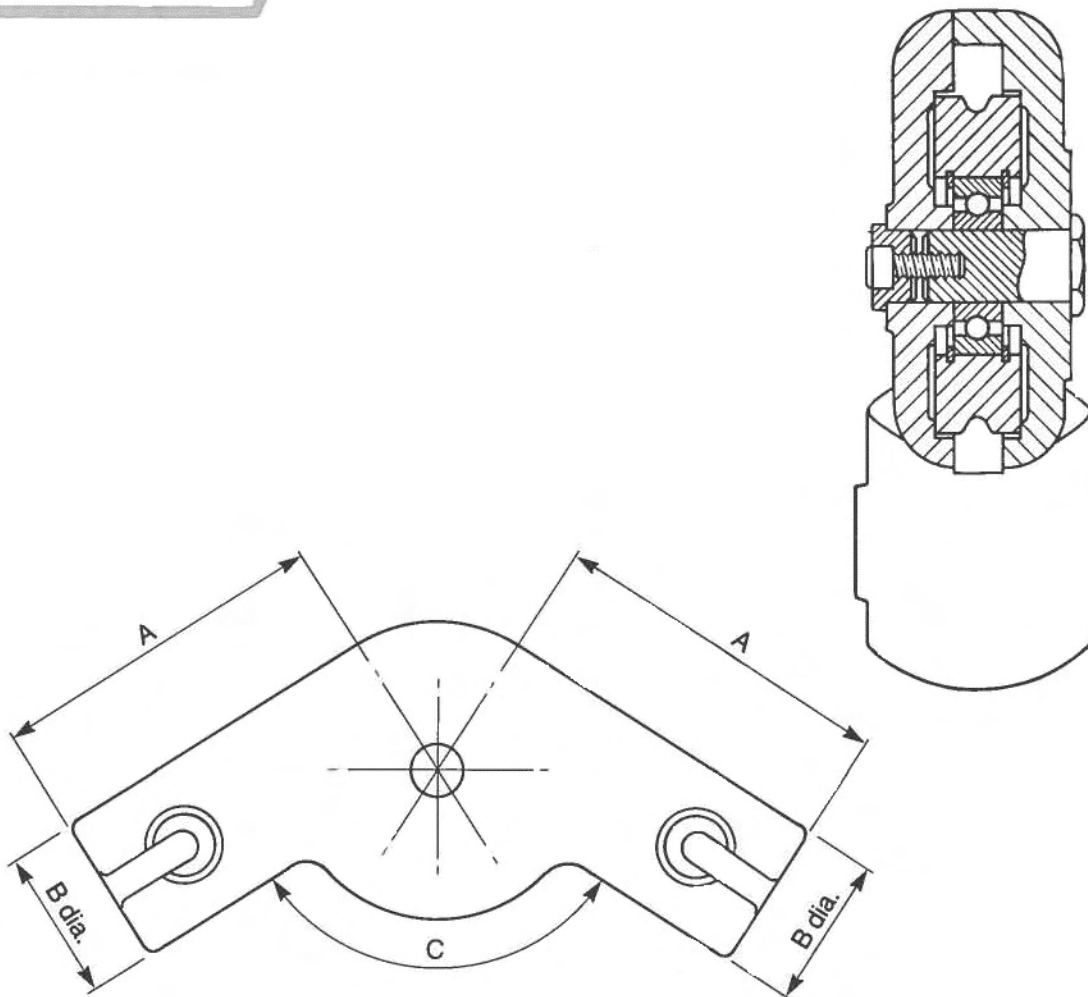




Tube Direction Changer



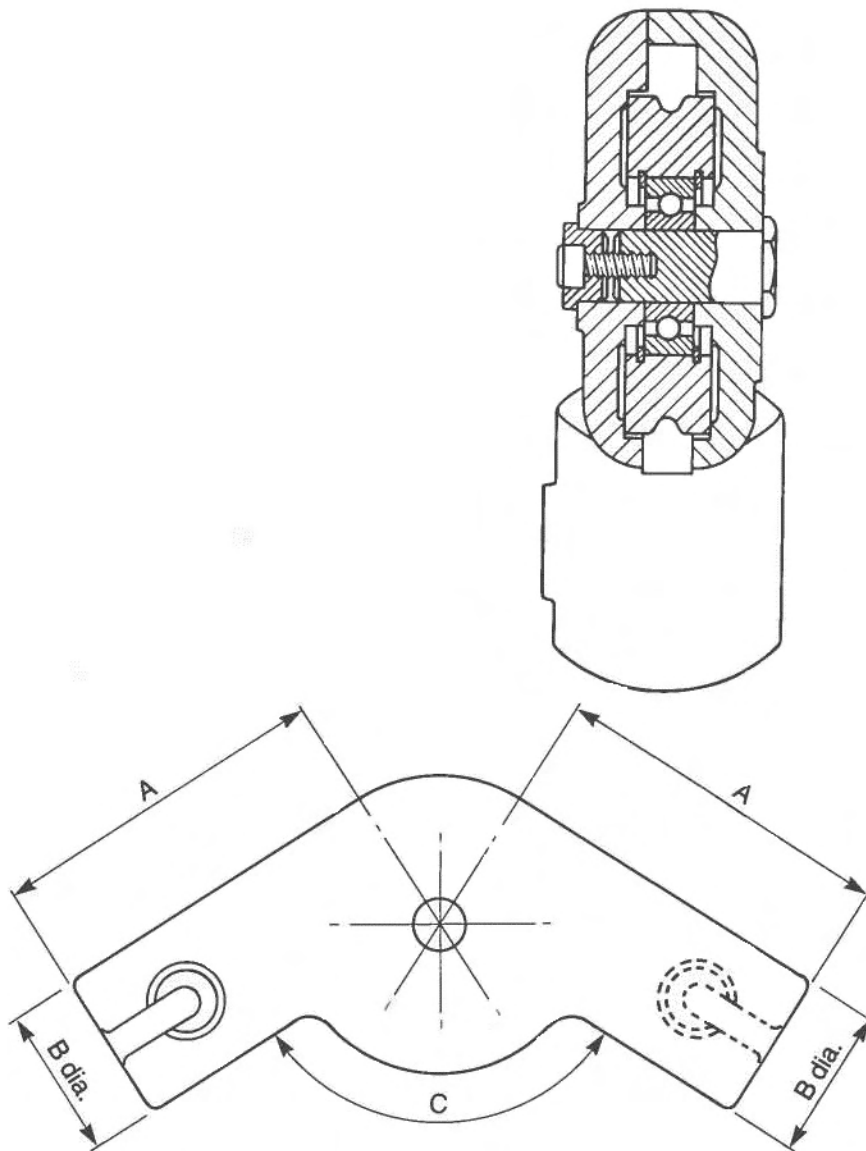
SPECIFICATION

Code No.	Hoist Capacity	A	B	C	Cable Length	Wt
42/49	127/254 kg 280/560 lb	111.1 mm 4.38 in	50.8 mm 2 in	115°	165 mm 6.5 in	1 kg 2.2 lb
43/126	508 kg 1120 lb	133.4 mm 5.25 in	57.2 mm 2.25 in	115°	216 mm 8.5 in	2.4 kg 5.3 lb
43/809	508 kg 1120 lb	133.4 mm 5.25 in	57.2 mm 2.25 in	90°	250 mm 9.8 in	2.4 kg 5.3 lb
91/111/C°	508 kg 1120 lb	133.4 mm 5.25 in	57.2 mm 2.25 in	VARIABLE	216 mm 8.5 in	2.4 kg 5.3 lb
54/789	610/914 kg 1344/2016 lb	165 mm 6.5 in	60.3 mm 2.38 in	115°	286 mm 11.25 in	3.6 kg 7.9 lb
54/110/C°	610/914 kg 1344/2015 lb	152.4 mm 6 in	60.3 mm 2.38 in	VARIABLE	260 mm 10.25 in	3.4 kg 7.4 lb

Non-standard angles also supplied to customer's special requirements.



Tube Direction Changer (off-set fixing)



SPECIFICATION

Code No.	Hoist Capacity	A	B	C	Cable Length	Wt
43/336/C°	508 kg 1120 lb	133.4 mm 5.25 in	57.2 mm 2.25 in	VARIABLE	21.6 mm 8.5 in	2.4 kg 5.3 lb

Non-standard angles also supplied to customer's special requirements.